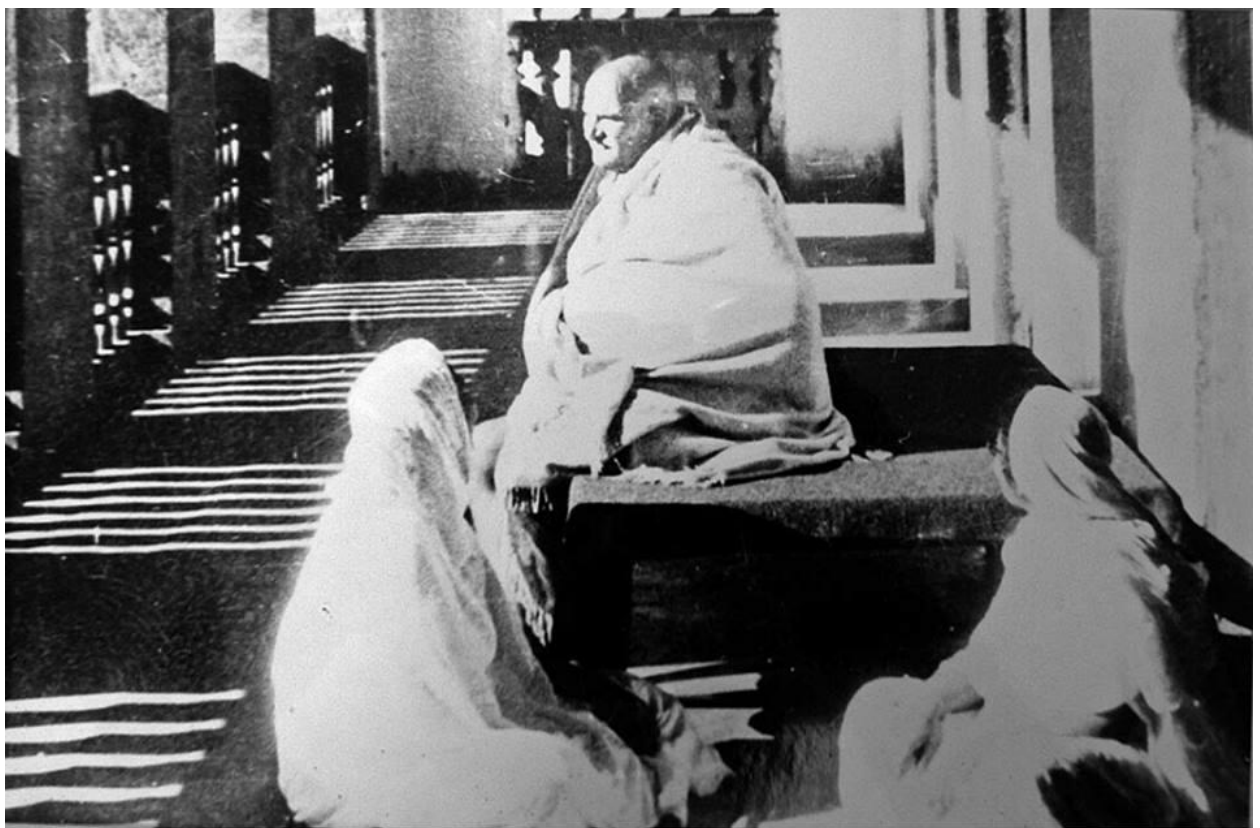


# **A Little Poem**

## **for Concert Band**



**Bill Robinson**

# A Little Poem for Concert Band

Duration: about 5 minutes 30 seconds  
Theme from 2004; composed March 9-31, 2015

In 1990 I wrote several works for my friend Fred Robinson who was the composer/arranger at Warner Robins Air Force Base in Georgia. Among these was a work for jazz band, *The Popular Music of Planet X* in three "Books". The idea was the rather whimsical one that somewhere among the myriad planets there could be a civilization where the prime incentive for the music industry was *not mercenary*. Clearly such a planet must be far far away. The Air Force didn't seem to appreciate the effort, and the score and parts were returned. (When you bomb with the Air Force....you *REALLY BOMB!*)

In 2004 I made many major alterations to the old *PMPX*, and had a brand new version, including *A Little Poem*. This remained unperformed, so in 2015 I arranged it for concert band. Finally, in 2023 I converted most of the band *PMPX* to a piano quintet, and then to orchestra as *Symphony No. 1: Popular Music of Planet X*. I now offer the four band movements of *PMPX* only as individual pieces, including this work.

## Performance Notes

**This work uses one musician per part**, with no sections, such as for clarinets or flutes. The String Bass part is intended for an acoustic bass. An electric bass may not be used in its stead. If an electronic keyboard is used instead of an acoustic piano, it should have a concert grand piano sound. However, the preference is strongly in favor of a real piano. The second alto saxophone has only a few measures of music, and in a pinch his part can be played by clarinets. Accidentals hold through the measure and not beyond. This is a C score with the usual transpositions in the parts.

*Cover; Neem Karoli Baba with two devotees.*

# Bill Robinson

Publisher Parrish Press, Garner NC      Second Edition 2023  
*corrected to January 12, 2024*      [www.billrobinsonmusic.com](http://www.billrobinsonmusic.com)

**Largo** (♩ = 40)

The score is for a full orchestra and piano. It begins with a **Largo** tempo, where a quarter note equals 40 beats. The key signature has one flat (Bb) and the time signature is 4/4. The score is divided into systems. The first system includes Piccolo, Flute (1 and 2), Oboe (1 and 2), and 2 Bassoons. The second system includes Clarinet in Bb (1, 2, and 3), Bass Clarinet in Bb, 2 E♭ Alto Saxophones, B♭ Tenor Saxophone, and E♭ Baritone Saxophone. The third system includes Horn in F (1, 2, 3, and 4), 2 Trumpets in Bb, Trombone (1 and 2), 2 Trombones, BTbn., Euphonium, and 2 Tubas. The fourth system includes Timpani, Piano, and String Bass. The Piano part features a **solo** section starting in the second measure. Dynamics include *p* (piano), *mp* (mezzo-piano), and *mf* (mezzo-forte). Phrasing is marked with *lunga* (long) and accents. The score is marked with a first ending bracket (*1*) at the beginning of several parts.

A Little Poem

This page of the musical score, titled "A Little Poem", covers measures 10 through 16. The score is arranged for a large orchestra and includes the following parts:

- Picc.** (Piccolo): Measures 10-16, starting with a *p* dynamic.
- Fl. 1** (Flute 1): Measures 10-16, starting with a *p* dynamic.
- Ob.** (Oboe): Measures 10-16, starting with a *p* dynamic.
- 2 Bn.** (Bassoon): Measures 10-16, starting with a *p* dynamic.
- Cl. 1** (Clarinet 1): Measures 10-16, starting with a *p* dynamic.
- Cl. 2** (Clarinet 2): Measures 10-16, starting with a *p* dynamic.
- BCL.** (Bass Clarinet): Measures 10-16, starting with a *p* dynamic.
- Alto 1 Sax.** (Alto Saxophone): Measures 10-16, starting with a *p* dynamic.
- Ten. Sax.** (Tenor Saxophone): Measures 10-16, starting with a *p* dynamic.
- Bari. Sax.** (Baritone Saxophone): Measures 10-16, starting with a *p* dynamic.
- Hn. 1** (Horn 1): Measures 10-16, starting with a *p* dynamic.
- Hn. 2** (Horn 2): Measures 10-16, starting with a *p* dynamic.
- Hn. 3** (Horn 3): Measures 10-16, starting with a *p* dynamic.
- Hn. 4** (Horn 4): Measures 10-16, starting with a *p* dynamic.
- Tpt. 1** (Trumpet 1): Measures 10-16, starting with a *p* dynamic.
- 2 Tbn.** (Tenor Trombone): Measures 10-16, starting with a *p* dynamic.
- Euph.** (Euphonium): Measures 10-16, starting with a *p* dynamic.
- Tuba 1** (Tuba 1): Measures 10-16, starting with a *p* dynamic.
- Tuba 2** (Tuba 2): Measures 10-16, starting with a *p* dynamic.
- Timp.** (Timpani): Measures 10-16, starting with a *p* dynamic.
- Pno.** (Piano): Measures 10-16, starting with a *p* dynamic.
- SB** (String Bass): Measures 10-16, starting with a *p* dynamic.

The score features various musical notations including dynamics (*p*), articulation (accents), and phrasing (slurs). The key signature is one flat (B-flat major or D minor), and the time signature is 4/4. The page number "16" is located in the top right corner.

A Little Poem

17

Picc.

1

Fl.

2

1

Ob.

2

1

Bn.

2

17

1

Cl.

3

BCl.

17

1

Alto Sax.

2

Ten. Sax.

Bari. Sax.

17

1

Hn.

2

3

4

1

Tpt.

2

Tbn. 1

BTbn.

Euph.

Tuba 1

17

SB

*f* *p* *mf*

*f* *p* *mf*

*f* *p* *mf*

*f* *p* *mf*

*f* *p* *mf*

*mp*

*mp*

*f* *mp* *mp*

*f* *mp* *mp*

*mf* *f* *p*

*p* *mf* *f* *mp*

*mp* *mf* *f*

*mf* *f* *p*

*f* *p* *mf*

*p* *mf* *f*

*mf* *f*

*p* *mf* *f*

*p* *mf* *f*

*p* *mf* *f*

*p* *mp* *mf*

*p* *mp* *mf*



A Little Poem

34 **35**

Bn. 1 *mf* *cresc.* *f*

Bn. 2 *mf+* *f*

Cl. 1 *f*

Cl. 2 *f*

Alto 1 Sax. *mf*

Ten. Sax. *mf*

Hn. 1

4 Hn. *mf* *cresc.* *f*

Tpt. 1 *f*

Tpt. 2 *f*

Tbn. 1 *f* *f dim.*

Tbn. 2 *f*

BTbn. *mp* *mf* *cresc.* *f* *f* *mf*

Euph. *f* *f dim.*

Tuba 1 *mp* *f dim.*

Tuba 2 *mp* *mf* *f* *f dim.* *mf*

SB *mp* *mf* *cresc.* *f* *f dim.*

40 **42** *rit.* *a tempo*

Fl. 1 *pp* *cresc.*

Ob. 1 *pp* *cresc.*

Cl. 1 *p* *pp* *cresc.*

Alto 1 Sax. *mp*

Ten. Sax. *mp* *p* *pp* *cresc.*

Bari. Sax. *mf* *mp* *p* *pp*

Tbn. 1 *(mf)* *(mp)* *p* *pp*

Euph. *(mf)* *(mp)* *p*

Tuba 1 *(mf)* *mp*

SB *(mf)* *(mp)* *p*

A Little Poem

46

Fl. 1 *p* *mp* *f*

Fl. 2 *f*

Ob. 1 *mp* *f*

Ob. 2 *f*

Bn. 1 *p* *mf* *f*

Bn. 2 *f*

Cl. 1 *p* *mf* *f* *f*

Cl. 2 *f*

Cl. 3 *f*

BCL. *f*

Ten. Sax. *mp* *f*

Bari. Sax. *mp* *mf* *f*

Hn. 4 *f*

Tpt. 2 *f assez*

Tuba 1 *f*

Tuba 2 *mf* *f*

Pno. *f* *Reo* \*

SB 46 *f*



A Little Poem

52

rit. -----

51

Picc. *pp*

1 Fl. *pp*

2 Fl. *pp*

1 Ob. *pp* solo

2 Ob. *pp*

2 Bn. *pp*

1 Cl. 2 *pp*

3 Cl. *pp*

BCL. *f*

Alto 1 Sax. *f*

Ten. Sax. *f*

Bari. Sax. *f*

1 Hn. 3 *f* *pp*

4 Hn. 4 *p* solo *pp*

1 Tpt. *f*

2 Tpt. *f*

2 Tbn. *f*

BTbn. *f*

Euph. *f*

2 Tubas *f* 1. *p* *pp*

Timp. *f*

Pno. *p* *rit.*

SB *f* *p* *pp*